

535 8th Street E., Saskatoon, SK., S7H 0P9 PH: 306-281-9877 email: info@nashi.ca web: www.nashi.ca

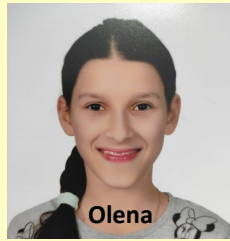
Registered Charity: 853912194RR0001

WINTER 2023

17 REASONS WHY YOU DONATE



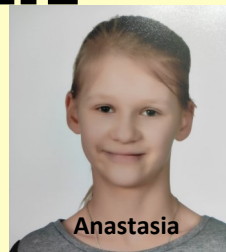
Olya



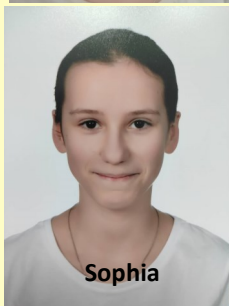
Olena



Natalia



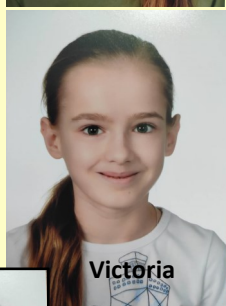
Anastasia



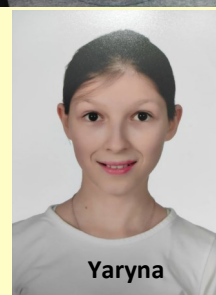
Sophia



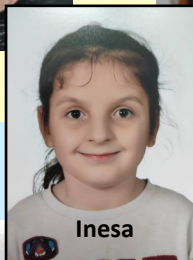
Sophyka



Victoria



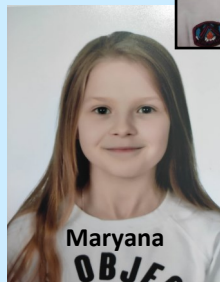
Yaryna



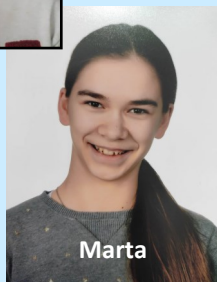
Inesa



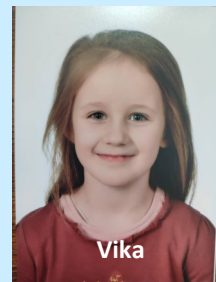
Nastya



Maryana



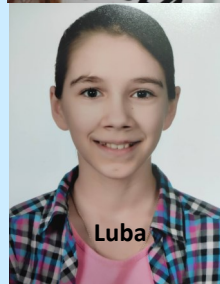
Marta



Vika



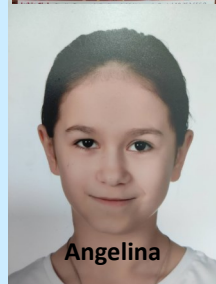
Maria



Luba



Ivanka



Angelina

"To our NASHI family. You have big hearts and have changed our lives. You mean so much to me and my sisters. I don't know where we would be without you. Hopefully we will see you one day."

Nastya

A SNAPSHOT OF NASHI

For 18 years, NASHI has remained steadfast and committed in our goal to make people aware of human trafficking and to build the Maple Leaf House for young at risk vulnerable girls in Ukraine.

This is a very brief history of our activities:

- Founded in 2004 – entirely run by volunteers in Canada
- Built the Maple Leaf House as a home for 20 girls (currently have 17)
- Realized the best way to deal with human trafficking is by education
- Built a solid reputation for hard work, action and accountability
- Given numerous presentations and seminars in Canada and internationally
- We are all members of the NASHI family and we have children in Ukraine

Our motto has always been: DO SOMETHING



The Maple Leaf House in Ukraine

A FEW FACTS ABOUT HUMAN TRAFFICKING

All children are at risk of sexual exploitation. Yes, even your children or grandchildren even in Canada. Children are inherently vulnerable and traffickers prey upon that vulnerability. Sadly, children are sexually exploited globally every day.

The facts:

- The biggest global travesty of the 21st Century
- Trafficking happens in every region of the world
- Human trafficking is the second largest and fastest growing criminal industry
- Traffickers lure youth with promises of protection, love and adventure
- Has increased due to social media
- 37 million people, including children, are living as slaves today
- 80% of all human trafficking victims are victims of sexual exploitation

**NASHI, with your help, continues to achieve our mission:
A world where girls are safe, valued and educated. We cannot help all girls
but we can do our part.**

A PAGE OF GRATITUDES

Behind every successful organization, there is an extraordinary team. NASHI has such a team that can make impossible tasks become accomplishable. We are so grateful to this fabulous team of:

**VOLUNTEERS
BOARD OF DIRECTORS
ORGANIZATIONS THROUGHOUT CANADA
DONORS IN CANADA AND USA
CHURCHES
SERVICE CLUBS
BUSINESSES
PEOPLE WHO SUPPORT PEROGY PARADISE**

You are the heart of a great cause, and we appreciate you enormously.



THE LATEST UPDATE

While our girls moved to safety in Poland and are now enrolled in the Polish village school, we still keep the doors of the Maple Leaf House open to families or individuals fleeing from areas under attack by Russian. We provide food and shelter to internally displaced children and families. As the crisis continues, NASHI is committed to upkeeping our Maple Leaf House and also our adopted home in Poland.

Being in contact with the girls in Poland they continually say:

“More than anything we want to return home.”



A MUST READ

FALL IN GLADYSZOW, POLAND

Hello NASHI family, supporters, and friends!

My name is Sydney, a third generation NASHI supporter from Calgary. I have been lucky enough to make a few visits to Maria, and the wonderful NASHI girls in Poland while living abroad this year.

As we all know, the ongoing attack on Ukraine continues to keep the girls from returning to their beloved Maple Leaf House in Stoyanov, Ukraine. While sitting around the huge family table in Poland, a tearful Maria flipped my husband and I through photos of their blooming gardens and orchards back home in Ukraine that have been lovingly cared for by her husband and devoted NASHI staff throughout this time of unrest. They all long for home, but I am so happy to report that the walls of their home in the tiny mountain village in southern Poland are filled with joy, song, and laughter.

Through a church connection, Maria and her husband were able to secure a facility large enough for all the girls to live together. The way the village people have stepped up to support all the NASHI girls is a deeply moving example of the love and kindness that humanity is capable of. Today, all the girls in grade school attend the village school where they are rising to the challenge of doing their studies in Polish, a language they had not previously learned. Maria has arranged for a local tutor to support the girls in learning the language and doing their homework.



Their Adopted Home In Poland



Two of the older girls, Ivanka and Nastya attend college remotely through their school in Ukraine. Ivanka (18) is studying horticulture and Nastya (17) is studying tourism and hopes to expand into psychology. Nastya's English would blow you away! She hopes to study or work in Canada one day and I have full faith that with the discipline and drive she has shown both in the classroom and in her own time that she will be able to achieve anything she sets her mind to. We were so lucky to have had her as a translator



during our visit. Maria also arranges for math and English tutors for them to ensure they each have the support they need to succeed.

The girls in grade school are cared for by their school community. We had a ball joining Olena, (Maria's daughter who also helps with the girls between her Medical school studies) to walk some very giddy girls to their school fall dance this September. The building has a beautiful brand-new gym that was vibrant with music and laughter. The girls love to dance and sing, and by the looks of it they have made wonderful pals with the local children as they were all greeted with excitement and hugs when we arrived.



To each and every member and supporter of the NASHI family: we thank you and hope to impress upon you how each



dollar donated, and volunteer minute given towards this cause, makes the most direct and immense impact in each of their precious lives. It is remarkable to hear them dancing, singing and learning in such a loving environment knowing that each of them arrived to NASHI from the most traumatic and devastating circumstances. Through the love and support of Maria, Olena, the NASHI staff, and professionals afforded through NASHI's fundraising efforts - these girls are able to thrive towards promising futures, held by the support of all of our efforts to make them know they are loved, cherished, and have the big NASHI family all over the world that truly loves them.



For now the future remains unknown. Maria has worked tirelessly to ensure they have a stable life in Poland, but they continue to pray for peace so they can one day return to Maple Leaf House.

Signing off with love and peace to all,

Sydney & David Morin

Giving Tuesday is the world's largest generosity movement. It is a global movement and one that encourages people to do good. Join the movement dedicated to giving back. NASHI, with your help, will continue to improve the lives of our girls. Please consider supporting NASHI by giving on November 29.



DID YOU KNOW:

100% of your donation goes directly to our NASHI projects

By Supporting NASHI, you give our girls:

A safe place to live - wherever they are

Nutritious meals

A chance to further their education

Medical and dental care

A healing place for childhood wounds

The opportunity to pursue their dreams

Thankfully for the girls there is support, safety and a hope for the future.

NASHI may be a small organization

but we are making a huge difference in the lives of the girls.

Please visit our YouTube Channel where you can see all our videos including our latest 23-minute documentary: [ONE PEROGY AT A TIME: THE SEQUEL](#)
You can view this on our website <https://www.nashi.ca/videos.htm>

DONATE

- **PayPal**
- **Cheques**
- **Canada Helps**
- **Credit Card**
- **Monthly Giving**
- **Phone in Credit Card to 306-653-4646**

E-transfers can be sent to admin@nashi.ca

If you can, use the form below, or download the monthly direct deposit, or monthly credit card forms available on our website. Also on our site are direct links to PayPal and now also Canada Helps, as well as instructions for sending E-transfer to admin@nashi.ca, or credit card over the phone. Cheques can always be mailed to ...

NASHI - 535 8TH Street East, Saskatoon, SK. S7H 0P9

*M*ONTHLY GIVING INFORMATION

I wish to make an automatic monthly contribution in the amount of:

____\$15 ____\$30 ____\$50 ____\$100 Other____ per month

To be withdrawn on the ____ 1st or ____ 15th of each month

____ I have enclosed a cheque marked "VOID"

____ I prefer to donate by Credit Card

Credit Card # _____ Expiry ____/____ CVA _____

Signature _____

Follow NASHI on:

WEBSITE: www.nashi.ca



[Facebook.com/nashiourchildren](https://www.facebook.com/nashiourchildren)

Find our videos on our site <https://www.nashi.ca/>



HAPPY BIRTHDAY SWEET SIXTEEN

Celebrating Sixteen years of hosting
PEROGY PARADISE

On Saturday April 29th, 2023
At Saskatoon's Cathedral of the Holy Family
Join us for Perogy Paradise 16
Our theme this year is
Happy Birthday Sweet Sixteen

Dress Code is 50's Sock Hop

Tickets will be available December 10th
Call 306-653-4646 or 306-230-8500

NASHI

535 8th Street East
Saskatoon, SK S7H 0P9
Phone: 306.281.9877
Email: info@nashi.ca

CANADA
POST



POSTES
CANADA

Postage paid
Publications Mail
43328018

Port payé
Poste-publications

